

Not just a rural occurrence: Farm Equipment-related Crashes

October, 2014

The problem

- Although approximately one-third of agricultural equipment-related crashes occur near towns, these crashes are thought to be a rural problem.
- Prior studies have not untangled the unique differences in farm equipment-related crashes by their proximity to town.
- Data from farm equipment-related crashes from nine Midwestern States, 2005-2008
- Crash zip codes were assigned as urban or rural (large, small or isolated) using Rural-Urban Commuting Codes
- Crash proximity to a town (miles) was estimated

The findings

1. **Almost one in three crashes occurred in an urban zip code.** (Figure 1) 31.6% of crashes occurred in isolated rural zip codes, followed by 30.2% in urban, 19.6% in small rural and 18.7% in large rural zip codes.
2. **Crashes in urban zip codes differed from those rural crashes.** Urban crashes were more likely to involve at least two vehicles, occur within town or/city limits or within one mile of a town or city. Of interest, the time of year of the crash did not differ by urban or rural zip code.
3. **Crashes within rural zip codes differ.** Compared to crashes in isolated rural zip codes, those in small and large rural zip codes were more likely to involve at least two vehicles, and occur within a city or town.
4. **Even crashes occurring outside a town or city are occurring close to a town or city.** (Figure 2) On average, crashes outside a town or city were 1.89 (urban zip codes) to 2.77 (isolated rural zip codes) miles from a town or city.

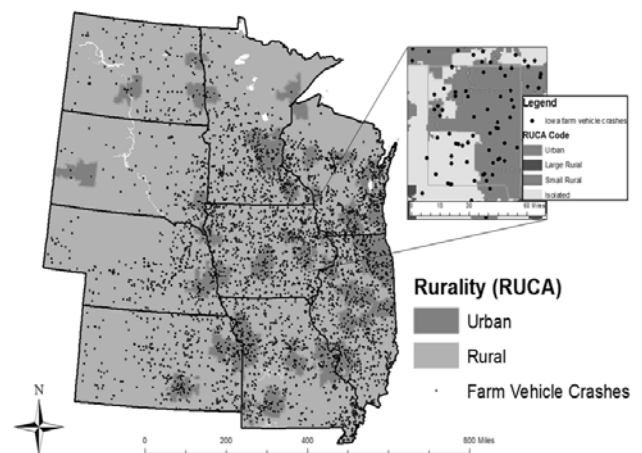
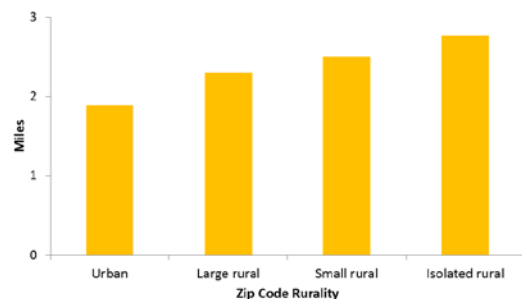


Figure 1. Locations of farm equipment-related crashes across 9 Midwestern States, by rurality, 2005-2008.

Figure 2. Among farm equipment-related crashes occurring outside a town or city, the mean distance, in miles, from crash site to a city/town, 9 Midwestern States, 2005-2008, N=3610



Safety Tips

All drivers:

- Be aware of farm equipment traveling on roadways, particularly when you are within two miles of a town or city.

Farm equipment drivers:

- Farm equipment roadway users should display a slow moving vehicle (SMV) emblem on their equipment and remove dirt and grime before going on the roadway.