

## Midwest Rural Agricultural Safety and Health Conference in Ames, IA November 6-8

by Gayle Olson, MS, CHES, I-CASH Assistant to the Director

Come join us at the 2024 Midwest Rural Agricultural Safety and Health (MRASH) Conference on November 6-8, 2024, at the Iowa State University Alumni Center.

A **pre-conference workshop** focused on how to work with the media to share ag safety & health messages will be held on November 6 at the Best Western University Park Inn and Suites; registration for the pre-conference workshop is free.



**Our MRASH keynote session** on Thursday morning will build around the “Messaging Matters” theme with speakers, panel members and some fun surprises. Effective messaging is important for all of us aiming to keep those who work in agriculture safe. How do we best target our audience? What tools are available to help translate research into actionable information? Are there ways AI helps us or hurts us? What are the best formats for us to use?

On Thursday afternoon, November 7, we will roll out our “Messaging in Minutes” where conference participants will have an opportunity to select hands-on topics to be addressed by rotating through various table groups. Thursday will also include MRASH favorites such as the student networking lunch and our poster reception. Friday morning will feature the breakout session roundtables and presentations, and the conference program will culminate with our awards luncheon. We are working to schedule some optional short tours for early Friday afternoon.

**YOU make our conference great!** Please submit an abstract to share your activities and studies with MRASH attendees. Abstracts are currently being accepted and there are different formats to choose from:

### IN THIS ISSUE

- MRASH Conference
- Directors Message
- 2024 I-CASH Youth Grant Awards
- Pesticide Handling Resources
- GPCAH Outreach Events
- The Flat Farmers are Here!
- GPCAH Pilot Grant Applications
- Relationships Can Heal Training
- I-CASH at FFA Leadership Conference
- News and Updates

- **Breakout session abstracts** for either a single presentation, or a round-table featuring multiple presenters with a common theme, are **due August 1**. These will be presented on Friday morning, November 8.
- **Poster abstracts** (check out the #better poster format!) will be **accepted until October 8**. These will be featured at the poster reception on Thursday evening, November 7 and may be left on display during the full conference.
- **Messaging in Minutes abstracts** (a new format this year) Practice hands-on skills with conference participants in 15-minute small group sessions. Writing catchy headlines? Making a social media schedule? Starting an infographic? Calculating readability? What is it that you would like to teach or learn? Abstracts are **due August 1**.

### **We would love to have you join us as a conference sponsor or exhibitor!**

Share your resources and network with others who are interested in ag safety and health information and making connections. Conference details including information about abstracts, sponsoring or exhibiting, and the venues are listed on the [MRASH webpage](#). If you have questions, please contact Gayle Olson, MRASH Conference Coordinator at [gayle-olson@uiowa.edu](mailto:gayle-olson@uiowa.edu). Hope to see you in November!

## Director's Message

by Renée Anthony PhD, CIH, CSP

June is a time of fast growth here in row-crop heavy Iowa, and the Great Plains Center for Agricultural Health (GPCAH) is usually settling down to provide our 40-hour Ag Safety and Health Core Course. The GPCAH has held a version of this course as far back as 1974 – when Kelly Donham first offered it as the Agromedicine Core Course. It was initially taught to let medical students and family practice residents understand the health and safety hazards on the farm. Over time, it expanded its audience to include nurses, extension specialists, emergency medicine technicians, pharmacists, health and safety professional, veterinarians, and farmers themselves in the target audience. The 40-hour curriculum – including instructional slides and case study examples – have been shared with educators across the country and around the world, helping partners share best practices on agricultural safety and health. This traditional course has been used to educate over 2000 persons world-wide.

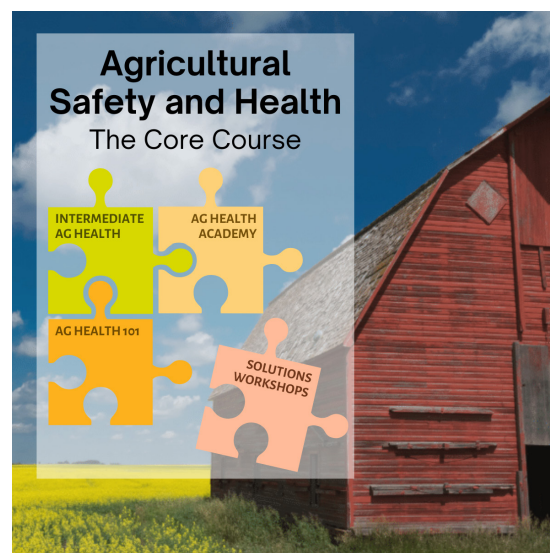


Renée Anthony PhD,  
CIH, CSP

This year, we are pausing the in-person class to transition to a new set of educational programs to better fit the needs of our continuing education students. We have been thinking about the future of learning for about 10 years, knowing that some aspects of ag safety and health courses may fit into a virtual format. In 2023, we asked alumni about course length and timing, and attendees from last year (when we held the course on sequential Fridays in June) indicated an appreciation of more time between classes to integrate lessons learned. Surveys of alumni from 2011-23 identified strong interest in having 1-2 hour sessions spread every month or two, to build advanced skills after the core course. And, anecdotally, others said that spending time in the car may be a good way to include audio education.

Taken together, we have developed a system of educational programs that meets the goals of the previous synchronous class, but which might better fit into schedules of continuing education for our target audiences. The system includes three parts:

1. **Ag Health 101:** a self-paced audio program that serves as the basic level of introduction to farming and its hazards,
2. **Intermediate Ag Health:** a set of self-paced, interactive ag health and safety online modules that will allow students to dive into topics at a deeper level, and
3. **Ag Health Academy:** a year of synchronous, monthly 90-minute sessions that include discussions with experts on advanced and just-in-time topics relevant to the ag safety and health community.



*continued on page 3*

Farm Families Alive & Well  
Published 4/yr  
Kay Mohling, Ed.  
319/335-4219  
[kay-mohling@uiowa.edu](mailto:kay-mohling@uiowa.edu)

Find us on Facebook at  
[www.facebook.com/GPCAH](https://www.facebook.com/GPCAH)  
[gpcah.org](http://gpcah.org)

  
**GREAT PLAINS**  
Center for Agricultural Health

We anticipate adding additional hands-on skills development courses ("Advanced Learning Community") to be provided in association with other regional meetings to round out educational skills for our region's agricultural health and safety advocates. These would include skills like respirator fit testing, hearing protection effectiveness, and disaster preparedness.

As of this summer, our **Ag Health 101** (audio) program was prepared for health care providers. Re-framing our discussions would be needed to make Ag Health 101 relevant to other audiences, such as extension agents or community college students. This audio program has 10 units on topics important to agricultural health, including confined spaces, heat illnesses, and pesticides. Within each unit, there are multiple micro-lessons, each ending with a

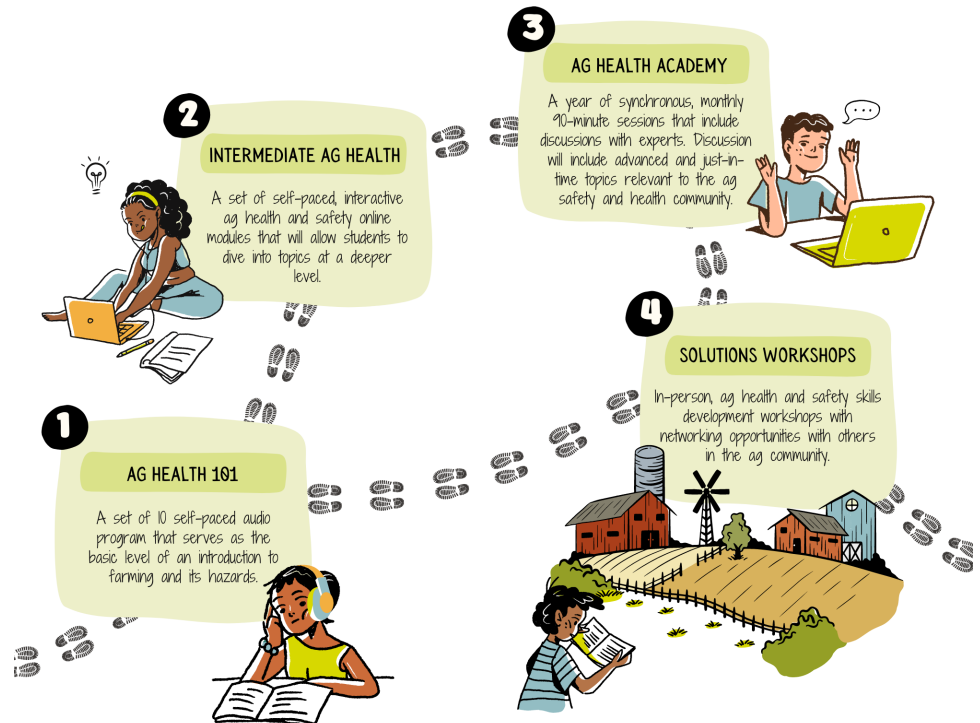
discussion question to reflect on what has been taught and how to integrate the information into your personal life or onto the farm. These lessons also have one-page graphical summaries and a list of resources if listeners want more details. There are short quizzes that will be available to take after listening to the entirety of a unit. The Ag Health 101 program, across all 10 topics, combines into an 8-hour audio course. Once this course is completed, we do recommend taking some or all of the **Intermediate Ag Health** courses, based on interest and need.

Our [Intermediate Ag Health](#) program is the combined "online modules" that we have presented previously in this newsletter. We now have 11 one-hour modules available on a variety of hazards on the farm, designed to be taken on a computer, with a pre- and post-test integrated into each module's course. Each course is a stand-alone, and we are revising the website to provide topic grouping that may be suitable for different agricultural operations or specialty student interests.

Our final tier of education, the **Ag Health Academy**, will be rolling out later this year. Once anyone has completed the other two levels of training, they would be eligible to enroll in this monthly meeting to learn practical information and emerging issue topics relevant to health and safety on the farm. Anyone who has completed the 40-hour Agricultural Health and Safety Core Course will also be invited to participate in this academy. These virtual ("Zoom") classes will be scheduled to invite experts to provide updates on best practices relevant to ag health and safety. Early topics identified for these expert sessions include personal fall arrest systems, ergonomics, and mental health resources.

These resources we have developed are free to the public, although registration for continuing education may require fees to obtain certificates of attendance through our certification organization if those are sought. If you have any interest in being involved in these courses, reach out to us at [cph-greatplainscenter@uiowa.edu](mailto:cph-greatplainscenter@uiowa.edu).

# NEW CORE COURSE MATERIAL PACKAGING





# 2024 I-CASH Agricultural Youth Grant Awards

by Tabitha Kuehn, BS, I-CASH Outreach Coordinator

Each year I-CASH provides funds for small grants to Iowa youth groups who help educate their community members and improve safety on farms in their area. This year eleven projects were funded.

## Adams County ISU Extension and Outreach

Area youth will promote fire safety in their local community by gathering fire safety information and delivering materials to farmers in the field. While sharing the materials they will also speak with farmers about fire safety and other farming topics. The goal is to bring fire awareness to farmers, and close generational gaps between the students and local farmers by building connections. Youth will also provide a presentation on the importance and impact of fire safety to the local Farm Bureau and Extension Council, as well as create a display for the county fair.



In 2023, Central Community FFA members provided area farmers with UV protection resources.

## CAC Media Group

CAC Media Group will host their first ever Ladies Livestock Luncheon. This luncheon will focus on bringing together middle and high-school girls involved in livestock production with women in professional roles in the community. The goal is to have professionals give brief presentations, engage the girls in a hands-on activity, and offer time at the end for questions and discussion. The topics to be discussed will include safe livestock handling practices and disease prevention, along with promotion of women as livestock producers. The organizers at CAC media group want to assure the next generation of women not only have the skills needed to handle livestock, but also the confidence to be a part of the decision-making process.

## Central Community FFA

The goal for this project is to create and deliver farmer first aid kits to improve the safety and health of area farmers. FFA members will also make an informational flier to be included with the kits which explains the items in the kits, how to properly use them, and suggestions on where to place the kits.

## Floyd County ISU Extension and Charles City FFA Chapter

In appreciation of local farmers, youth will provide safety and health resources to farmers in a 5-gallon bucket. This program will run during the 2024 harvest season and will use community volunteers and youth to distribute the buckets in support of farmers in the community and county.

## Franklin County ISU Extension and Outreach

4-H members will organize and present a farm safety program to youth and their parents/guardians following a Little Farmer Day Camp in May. The program will teach local farm families the basics of farm safety, and highlight awareness of youth safety on the farm. There will also be a hearing protection demonstration, and each family will leave with a farm safety kit. 4-H members will research the topics, create farm safety kits, promote the event, and present the information.

## Louisa County ISU Extension and Outreach

Louisa County ISU Extension will host a farm safety day for elementary students at the Louisa County Fairgrounds. The interactive sessions will provide hands-on experiences from local professionals and high

# Educational Resources for Safe Pesticide Handling

by Carolyn Sheridan, RN, BSN, Executive Director/Founder Ag Health & Safety Alliance

The Ag Health & Safety Alliance (AHSA) has developed three informative animated motion graphics to help better understand personal protective equipment (PPE) used for safe pesticides handling. The series of three videos provides guidance on interpreting what pesticide labels indicate as appropriate PPE and identifies best practices for storage and care of both respirators and chemical gloves. The Great Plains Center for Agricultural Health (GPCAH) contributed to the project by providing scientific review of the content

and funding support. These are great resources to answer basic questions about selection and storage of important tools to protect farmers during pesticide handling tasks. In 2023, AHSA partnered with GPCAH on an [article about the use of infographics in agricultural health and safety programs](#) in the *Journal of Agromedicine*, highlighting their effectiveness in conveying information to young adults.

*It is important to realize that reading the PPE requirements on a pesticide label is only just the beginning. The young adults we work with should know how to properly use PPE and take care of it. It's not enough to simply glance over instructions, and these motion graphics help us communicate important tips in a short time frame.*

- Carolyn Sheridan, Executive Director of AHSA



All three videos are now available for viewing:

- Proper Respirator Storage  
[https://youtu.be/V3GK4ru96vg?si=06xIPEiSgc\\_pFJKW](https://youtu.be/V3GK4ru96vg?si=06xIPEiSgc_pFJKW)
- The Label is Your Guide  
<https://youtu.be/ePDXNt3yITQ>
- Chemical Gloves Use and Care  
<https://youtu.be/XO5V94Sx4c8>

During the 2024 spring semester, AHSA educators showcased these animations at national Gear Up for Ag Health & Safety™ programs. The motion graphics also played a pivotal role in a community-based educational initiative at Mississippi State University focused on preparing young adults for Worker Protection Standard (WPS) requirements. These videos are available to have conversations with pesticide handlers in a variety of work and educational settings. Additional pesticide health and safety resources can be found [here](#).



The chemical glove motion graphic was shown prior to a practice donning/doffing session of pesticides-related PPE at Mississippi State University. (Photo: JL Gibbs)

Contact Carolyn Sheridan at [carolynsheridan@aghealthandsafety.com](mailto:carolynsheridan@aghealthandsafety.com) or visit [Ag Health & Safety Alliance](#) for more information on the motion graphics.

school peer mentors, as students move from station to station. A video will be created by Louisa 4-H County Council members and Louisa County Extension over the course of the day. At the end of the day, each group of students will talk about a safety topic and share what they learned for the video. The video will be posted via social media and websites with ISU Extension, the partners leading the stations, and the participating schools.

### **MMCRU FFA**

The goals of this project are to help young students be aware of farm dangers, especially bystander safety, and how they can take simple steps to be safe. Large machinery was parked at the safety day to allow students to sit in the seat and see where the blind spots are around a piece of equipment. The MMCRU FFA Chapter supplied each student with a high visibility safety vest so they could see how wearing this vest can help attract attention and increase visibility. Students were able to make their vests more personal by adding decorations with markers to get them excited to wear the vest when needed.



Elementary students received high visibility vests as part of a farm safety day held by MMCRU FFA.

### **Natalie Schroeder - Calamus Wheatland**

Natalie will create fun, minute-long safety videos on anhydrous awareness, as part of her FFA Ag Communications SAE. The videos will be shown to all Calamus-Wheatland's elementary school students and eventually shared across the Calamus Wheatland FFA social media sites including Facebook, Instagram, and website, to reach a broader audience. At the end of the video, elementary students will be quizzed, and one winner will receive a prize in the theme of a video topic.

### **Southwest Valley FFA**

Southwest Valley FFA wants to promote safety in agriculture by providing easily accessible first aid kits for farmers to keep in their equipment, as well as educate farmers of the risks and rewards of proper medical care after minor farm incidents. They plan to work with their school nurse, local healthcare professionals, and local first responders to determine what supplies are needed in the first aid kits, and will also research and share information on farm incidents, and ways farmers can mitigate potential incidents on their farm.

### **Stampeding Clovers 4-H**

Stampeding Clovers 4-H members plan to make posters to promote ATV safety and helmet usage at local events, including Muscatine County horse shows in June, July, and August. They will also highlight ATV safety and helmet usage at the Muscatine County Fair. To increase engagement with the safety campaign, 4-H members will have a "helmet hair" photo/video contest with prizes.

### **Washington County ISU Extension and Outreach**

Washington County 4-H and ISU Extension and Outreach will continue their popular "Stay Safe, Take a Break" program, where students meet farmers in the field during harvest and remind them to take breaks and provide them with a resource bag. This year the project will focus on fire safety and 4-H members will distribute fire extinguishers to the farmers. Youth members will also create a display about the "Stay Safe, Take a Break" project for the county fair.

**Applications for the 2025 Youth Grants will be available in January, visit [www.i-cash.org](http://www.i-cash.org) for details.**



## Visit GPCAH at Outreach Events This Summer!

by Marsha Cheyney, MPH, GPCAH Evaluation and Outreach Coordinator

GPCAH is connecting with agricultural communities, producers, educators, healthcare professionals, and farm safety advocates through several events this summer. At all of these events, we will encourage attendees to share their safety success stories with our [FarmSafe podcast](#) listeners, so stop by and let us know how you are approaching health and safety hazards on the farm. We will also promote a new [Farmer/Rancher Registry](#) to allow us to reach back out to farmers about new health and safety research opportunities.



### International Society for Agricultural Safety and Health (ISASH) Conference June 18-20, Portland, OR

ISASH is dedicated to the professional development of ag safety and health professionals and provides national and international leadership in preventing injuries and illnesses within the ag community. The GPCAH outreach team will be on hand to share information about Ag Health 101 (our newest ag health and safety curriculum) and provide demonstrations on how to use the [Flat Farmers](#) (our new PPE selection educational tool) to ISASH participants.

### Minnesota FarmFest August 1-3, Redwood County, MN

The outreach team will collaborate with the Central States Center for Agricultural Safety and Health (CS-CASH) and the Progressive Ag Foundation (PAF), to pilot a PAF Safety Zone (a condensed “mini Ag Safety Day”) in the Upper Midwest Agricultural Safety and Health (UMASH) Wellness Pavilion at Minnesota Farmfest this year. GPCAH staff will bring the Flat Farmers to provide PPE selection education for this activity, focusing on sun safety. We will also be collecting information about farmers’ health and safety concerns with a short survey. Stop by to check it out!

### Farm Progress Show August 27-29, Boone, IA

We are excited to coordinate the Ag Health & Safety tent again this year at the 2024 Farm Progress Show, the nation’s largest farm event. The Health & Safety tent will host a PAF Safety Zone (coordinated by CS-CASH), and GPCAH will bring the Flat Farmers to help us share sun safety and other PPE selection information. We will also continue collecting information about farmers’ health and safety concerns at this event.

If you have questions or topics that you would like to talk about with our outreach team, please contact us at [cph-greatplainscenter@uiowa.edu](mailto:cph-greatplainscenter@uiowa.edu).

### Interested in Joining the Health & Safety Tent at Farm Progress Show?

The Farm Progress Show Health & Safety Tent hosts exhibits from organizations that provide **health, safety, and/or wellness education or services** to farmers and rural residents. Thousands of farmers, farm workers, and their family members visit the tent each year – this is a great opportunity to interact with them! Email Marsha Cheyney ([marsha-cheyney@uiowa.edu](mailto:marsha-cheyney@uiowa.edu)) for more information or to discuss your exhibit ideas.



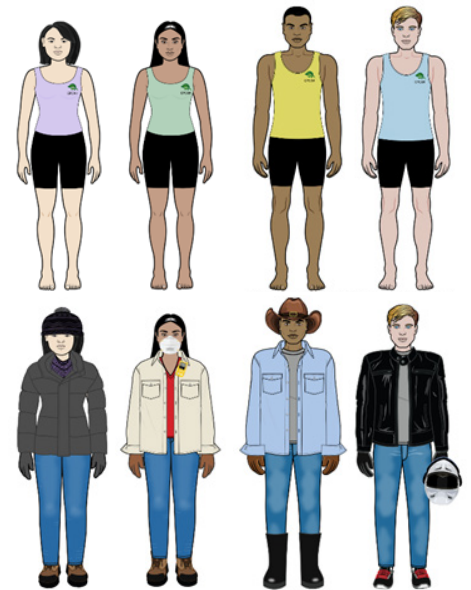
**FARM  
PROGRESS  
SHOW 2024**

**AUGUST 27–29, 2024  
BOONE, IOWA**

## The Flat Farmers Are Here!

by Marsha Cheyney, MPH, GPCAH Evaluation and Outreach Coordinator

In the December 2023 newsletter we highlighted the “Flat Farmers” project that was introduced at the National FFA Convention. The Flat Farmers are a group of four farmer images representing different genders and races of farmers and farm workers that come with a variety of clothing and personal protective equipment to keep them safe while they work. You can now find them at their new home on the [GPCAH website](#). This group of farmers is smaller than the ones that visited the FFA Convention – the perfect size to print on any standard printer. They come with a user guide that gives tips on how to prepare them for different environments and outlines the steps involved in using them in outreach and educational settings. To get you started, it also includes a chart of ten chores with the recommended PPE choices marked and a blank chart so you can add chores that are common in your region.



We are planning to make additions to the Flat Farmers over time, adding new clothing and PPE and perhaps making them available in different sizes. We’ve included a sign-up on the website so users can get a notification when new versions are added. **We’d love to hear about your experience with the Flat Farmers.** How/where will you use the Flat Farmers? What clothing or PPE would you like to see added? Is there another size you would like to have the Flat Farmers available in? Please email us at [cph-greatplainscenter@uiowa.edu](mailto:cph-greatplainscenter@uiowa.edu) to let us know how you are using them, or to make suggestions for improvements.

The National Children’s Center for Rural and Agricultural Health and Safety invites you to participate in a short survey. The focus of this study is to identify factors affecting the use of the Agricultural Youth Work Guidelines, a set of 48 guidelines to be used by parents and youth supervisors to help them assess a youth’s physical and developmental capabilities before assigning them a task on the farm. We are looking for feedback from those who:

- are 18 years old or older,
- are actively engaged in agriculture, and
- oversee youth between the ages of 7 and 18 performing tasks in an agricultural environment.



We are asking you to complete a 10-minute survey. Survey results will be used to improve the use and dissemination of the [Agricultural Youth Work Guidelines](#). **You will receive a \$10 Amazon gift card for completing the survey.**

We appreciate your time and consideration in completing this survey. Your participation is completely voluntary, and your responses will be kept confidential.

If interested in taking this survey, please scan the QR code or visit the following link:  
<https://redcap.mcrf.mfldclin.edu/redcap/birc/surveys/?s=LALDCJ7WW8DFFJXP>

Questions?

Please contact us at: [nccrahs@marshfieldresearch.org](mailto:nccrahs@marshfieldresearch.org) or 1-800-662-6900.





## Call for Pilot Grant Applications

by Kim McMichael, GPCAH Center Coordinator

The GPCAH funds pilot projects up to \$30,000 (direct costs including salary, materials, equipment, etc.) intended to promote innovative outreach and research efforts to prevent agricultural injury and illness in our Midwest Region.

The pilot program supports both community-based organizations and academic researchers. Previous topics include respiratory protection training to prevent COVID-19, suicide prevention training within Iowa's agricultural community, and how working conditions impact worker immune function and respiratory health.

Encouraged proposal topics include:

- Prevention of slips, trips, and falls
- Machine safety
- Chemical safety
- Work-related stress and mental health
- Any topic of relevance to the GPCAH mission: to prevent agricultural injury and illness and improve safety and health among agricultural communities.

**Applications are due by 5 p.m. on July 5<sup>th</sup>**

Visit <https://bit.ly/2024GPCAHpg> to learn more about Pilot Grants and read the RFP.



**GREAT PLAINS**  
Center for Agricultural Health

### CALL FOR PILOT GRANT APPLICATIONS

**Promoting innovative outreach & research to prevent agricultural injury and illness.**

Potential topics include:

- Injury prevention
- Machine Safety
- Chemical safety
- Work-related stress and mental health

[bit.ly/2024GPCAHpg](https://bit.ly/2024GPCAHpg)

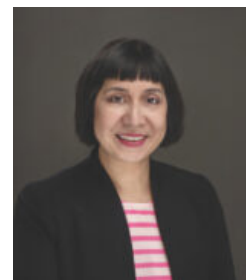


## 2023 Pilot Grant Recipient

Abstract author Gabriela Gracia, PhD, Department of Environmental and Occupational Health Sciences, University of Illinois, Chicago

### Abstract

Farmworkers (FWs) are at increased risk of heat-related illnesses (HRI) and skin cancer due to sun and heat exposure, high intensity work, and complex socio-ecological factors from the individual to the policy level. Heat safety guidelines recommend clothing that is loose fitting and light colored to reflect heat. Inappropriate workwear can increase the heat and UV burden on workers. Workers' clothing selection is driven by their perception of risk, the availability of inexpensive and durable workwear, and cultural and personal beliefs. This pilot will use key informant interviews and focus groups with FWs and farm labor supervisors (FLSs) to determine: 1) how diverse organizational hierarchies affect heat safety practices, 2) barriers to the uptake of heat- and sun-protective clothing, and 3) intervention approaches to promote the adoption of clothing that protects workers from HRI and UV. Check [GPCAH.org](https://GPCAH.org) for updates.



Gabriela Gracia, PhD

## Relationships Can Heal Training

by Rich Gassman, MS, I-CASH Director

***Relationships Can Heal: Knowing the Farmer Client*** is a continuing education training that provides an overview of agricultural practices in the Midwest to inform mental health providers about their agricultural clients' work experience.

I-CASH is partnering with Iowa State University Extension and Outreach (ISUEO) to provide the training which focuses on the culture, occupation, and well-being of farm and ranch producers. In April, training sessions were held in Atlantic and Grinnell; additional training sessions are planned for October 2024 in Dubuque and Sioux City. For more information contact Demi Johnson at (641) 210-8631 or [demij@iastate.edu](mailto:demij@iastate.edu).



Tim Christensen, ISUEO Farm Management Specialist, leads a discussion at the Relationships Can Heal training in Grinnell, IA.

## I-CASH at FFA Leadership Conference

by Tabitha Kuehn, BS, I-CASH Outreach Coordinator

In April, I-CASH attended the Iowa FFA Leadership Conference in Ames, Iowa. This was the second year I-CASH had an exhibit at this conference, and we look forward to attending many more in the future. This conference allows us to interact with FFA members and advisors from across the state, and it is a great opportunity to get a pulse on what young people in agriculture are interested in. This year, as students visited the booth and collected protective eyewear and hearing protection, they were asked to write down one way they practice agricultural safety in their lives. Students were told to consider their home farms, agricultural work, FFA activities, and beyond. We got a great variety of responses!

Many FFA Chapters host annual farm safety days and mentioned those events as agricultural safety and health examples, and others were inspired by the I-CASH safety materials on display and wrote about times when they wore eye protection, such as in shop class. This activity opened up conversations about all the different moments where safety is important in the agricultural world. Students were able to look at their agricultural interests with a new lens and see ways they already practice safety, and identify areas where safety could be improved. As we continue planning future campaigns, activities, and our agricultural youth grant program, we hope to use these responses to help us continue to connect with young Iowans and create resources on the topics they care about. I-CASH is very appreciative of all the FFA members and advisors that stopped by our booth at the FFA Leadership Conference.

How do FFA members practice agricultural safety?

- *I have someone supervise me when I'm operating a tractor or lawn mower.*
- *I wear sunscreen when harvesting apples.*
- *I wear a helmet when I am on an ATV.*
- *Knowing my surroundings and staying out of blind spots.*
- *I make sure the safety shields on equipment are not removed.*
- *We keep a fire extinguisher on the combine.*

# NEWS AND UPDATES

## SAVE THE DATE

The Midwest Rural Agricultural Safety and Health Conference (MRASH) will be held November 6-8, at the Iowa State University Alumni Center, Ames, Iowa. The conference theme is **Messaging Matters!** and abstracts are now being accepted:



**Submit  
an Abstract**



- Breakout session and “Messaging in Minutes” abstracts are **due August 1**
- Poster abstracts are **due October 8**

The pre-conference workshop is scheduled for Wednesday, November 6 at the Best Western University Park Inn and Suites; this year’s topic is working with the media.

An important part of the MRASH Conference is you! Visit the [conference website](#) for details.

## National Farm Safety & Health Week - September 15-21

Fall harvest time can be one of the busiest and most dangerous seasons of the year for the agriculture industry. For this reason, the third week of September has been recognized as National Farm Safety & Health Week. The 2024 theme is **Don’t Learn Safety by Accident.**



Each day of the week has its own focus, daily themes are listed below.

- Monday, September 16, 2024 - Equipment and Rural Roadway Safety
- Tuesday, September 17, 2024 - Health and Wellness
- Wednesday, September 18, 2024 - Generations of Farming
- Thursday, September 19, 2024 - Confined Spaces
- Friday, September 20, 2024 - Reporting Ag Injuries

Visit [www.necasag.org](http://www.necasag.org) for more information.

## Upcoming Events

June 17-20

**International Society for Agricultural Safety and Health (ISASH) Conference**  
Portland, OR

July 9-12

**Agricultural Health and Safety Course for Medical and Safety Professionals**  
Omaha, NE

July 14-18

**National Association of County Agricultural Agents Annual Meeting**  
Dallas, TX

July 28-31

**ASABE 2024 International Meeting**  
Anaheim, CA

August 1

**Iowa Women in Agriculture Conference**  
Ankeny, IA

August 6-8

**Minnesota Farmfest**  
Redwood County, MN

August 27-29

**Farm Progress Show**  
Boone, IA

September 10-12

**Husker Harvest Days**  
Grand Island, NE

September 15-21

**National Farm Safety and Health Week**

October 23-26

**National FFA Convention & Expo**  
Indianapolis, IN

November 6-8

**Midwest Rural Agricultural Safety and Health Conference (MRASH)**

November 21

**National Rural Health Day**



The University of Iowa prohibits discrimination in employment, educational programs, and activities on the basis of race, creed, color, religion, national origin, age, sex, pregnancy, disability, genetic information, status as a U.S. veteran, service in the U.S. military, sexual orientation, gender identity, associational preferences, or any other classification that deprives the person of consideration as an individual. The university also affirms its commitment to providing equal opportunities and equal access to university facilities. For additional information on nondiscrimination policies, contact the Director, Office of Equal Opportunity and Diversity, the University of Iowa, 202 Jessup Hall, Iowa City, IA 52242-1316, 319-335-0705 (voice), 319-335-0697 (TDD), [diversity@uiowa.edu](mailto:diversity@uiowa.edu).