

Good News from MRASH!

by Gayle Olson, MS, CHES, I-CASH Assistant to the Director

The 2025 Midwest Rural Agricultural Safety and Health (MRASH) Conference will be held at Hotel Millwright in Amana, Iowa, on November 13-14 this year, in spite of financial and personnel changes. The conference theme is **“Cultivating Connections: Health, Safety and Wellness in Agriculture,”** built around One Health concepts.



**Midwest Rural Agricultural
Safety and Health Conference**

**Cultivating Connections:
Health, Safety & Wellness in Agriculture**



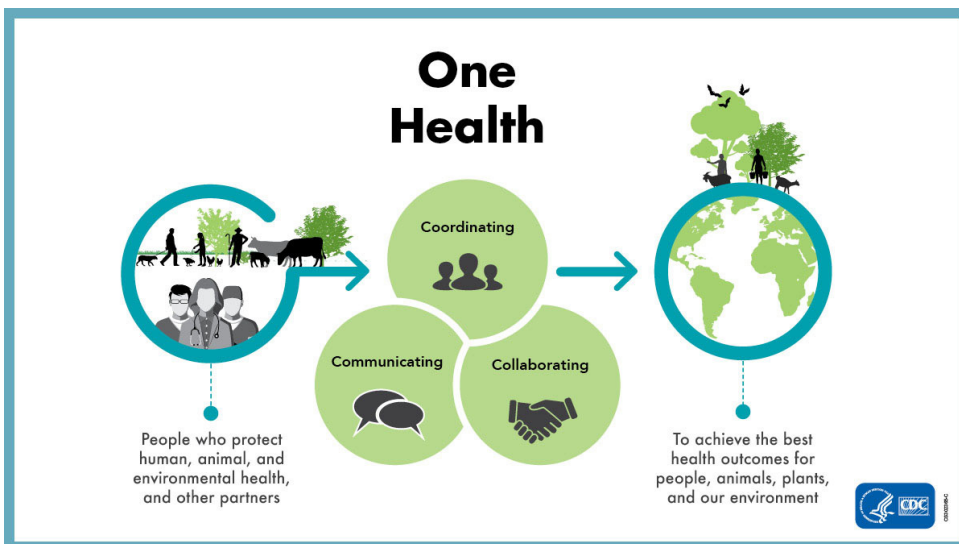
Dr. Jeff Bender will provide the MRASH keynote.

We are thrilled that [Dr. Jeff Bender](#) has agreed to be our keynote speaker. Dr. Bender has a background in both veterinary medicine and public health and currently directs the Upper Midwest Agricultural Safety and Health Center. With MRASH's emphasis on bringing together a wide range of perspectives in ag safety and health in a small, friendly atmosphere, it is the perfect venue for pursuing One Health ideas.

As the [U.S. Department of Interior](#) describes One Health, “This approach integrates human, animal, plant, and environmental health sectors to address complex health issues, such as zoonotic diseases, emerging infectious diseases, antimicrobial resistance, and threats to ecosystems. The importance of One Health lies in its ability to foster effective communication and cooperation across various sectors, ultimately enhancing public health preparedness and resilience.” Our planning team has worked thoughtfully to streamline the conference while preserving key components that make MRASH one of our favorite places to learn and network. We will start the first day of the conference later in the morning to allow travel time for participants. The schedule will include several opportunities for networking, but there will NOT be a preconference workshop on November 12.

IN THIS ISSUE

- MRASH Conference
- Director's Message
- 2025 I-CASH Youth Grant Awards
- Ag Health Academy
- 2024 MRASH Pre-conference Video
- Rural Roadway Project
- GPCAH Journalist Workshop
- Protect Your Flock
- FarmSafe Podcast Spring Episodes
- Farm Families Coping with Dementia
- News and Updates



We are **now accepting abstracts** for breakout sessions (presentations and roundtables) and posters. **Deadlines are August 1 for breakout sessions and October 15 for posters.**

continued on page 7

Director's Message

by Renée Anthony PhD, CIH, CSP

Chances are that this is the last director's message from the Great Plains Center for Agricultural Health (GPCAH). Why? The Federal Government, including the administrator of the Department of Health and Human Services, has been working to eliminate the National Institute for Occupational Safety and Health (NIOSH) which funds our ag center. This agency, authorized to conduct research and provide training to our country's workforce since it was formed in 1970, has been the funding source for GPCAH and 11 other agricultural health and safety centers. You may have heard that NIOSH is "just moving," although it is unclear how many experts within NIOSH will remain to be relocated into the new "Administration for Healthy Americans." While the news reported NIOSH firings back on April 1 and the second round on May 2, a few have been reinstated, but there is, as of printing, no one to manage extramural funding needed to continue the US Ag Centers. These NIOSH cuts seem to be intended to also terminate research and training performed by those outside of the agency itself. We have been told to anticipate that once our current award period ends in September, there will be no funding for the remaining two years of projects that had been approved. Hence, unless there are big changes, this may be our last "Director's Message" for *Alive & Well*.



Renée Anthony PhD,
CIH, CSP

As we plan on closing projects, I want to reflect on GPCAH contributions to farmers across the Midwest since our founding in 1990. In the early days, before my involvement in the center, investigators conducted a decades-long study of farmer health in Keokuk, IA; generated and evaluated the Certified Safe Farm (CSF) safety checklist; and collaborated with Iowa's Center for Agricultural Safety and Health (I-CASH) to provide the annual Midwest Rural Agricultural Safety and Health conference. When the federal government stopped tracking farmer injuries, the GPCAH used multiple data bases to [examine trends](#) to identify where resources were needed to protect farmers based on new and persistent hazards.

Since 2011, when I became involved in the GPCAH, first as an investigator then as director, the GPCAH developed new research projects. We investigated ways to improve the air quality in livestock buildings to protect both farmer and animal health, evaluated musculoskeletal risks factors on the farm and started developing solutions for whole body vibration hazards from farm equipment operations, and identified specific roadway hazards related to farm-vehicle crashes and developed and tested community intervention programs to protect farmers on our rural roadways (see story on page 8). One of our [newest projects](#), kicked off in 2023, focuses on preventing farm-related injuries for rural family members with dementia (see story on page 10). Training programs have been developed and pilot-tested, and the remaining months of our NIOSH funding will provide training to ag communities to help caregivers who support persons with dementia on the farm. These and other [GPCAH research projects](#) have been focused on ways to answer questions that have come from farmers that we serve.

In addition to answering research questions, the GPCAH outreach team has spent decades developing educational tools to help reduce risks from hazards on the farm as well as share what we learn from research activities. From the start, we focused on educating medical providers, then expanded to reach other health

continued on page 3

Farm Families Alive & Well
Published 4/yr
Kay Mohling, Ed.
319/335-4219
kay-mohling@uiowa.edu

Find us on Facebook at
www.facebook.com/GPCAH
gpcah.org



GREAT PLAINS
Center for Agricultural Health

care providers, safety and health professionals, and farmers themselves, particularly those starting their farming careers. Our 40-hour Ag Safety and Health Core Course curriculum has been adopted globally. With new distance learning technologies, we adapted our materials to interactive [multi-media platforms](#), which now provide free educational programs and continuing education available for anyone to learn about farming hazards and prevention approaches. We developed innovative tools and outreach tool kits to guide others who work with farmers, ranging from hands-on activities to promote hearing loss prevention to the new Flat Farmers tool to help explain PPE use on the farm. We also share stories and tips in the FarmSafe Podcast, sharing lessons learned from researchers and specialists across the country. With funding ending, we are working to secure these web-based resources, so they remain available to the public after our funding ends.

As we wrap up 35 years of GPCAH activities, I want to provide my sincere thanks and gratitude for all our partners and collaborators over the years. Their insights and connections helped amplify our reach and maximize the quality of work we performed.

Last, but not least, thanks to every farmer who offered us their time, showed us their farm, and let us test new technologies designed to help them produce food safely. A special thanks to farmers who shared a personal story so that we could help others prevent an injury.

We have a glimmer of hope that funding might be reinstated but acknowledge that support for America's workers, including farmers, is no longer a national funding priority. However, we are grateful for the opportunity to work toward our mission to prevent injury and illness on the farm. Our team has been passionate about helping our region's farmers be safe and healthy while supporting productive Midwest agricultural practices. It has been our honor to help protect this important resource, our farmers.

Dr. Renée Anthony directs the GPCAH, housed in the Department of Occupational and Environmental Health of the College of Public Health. She can be reached at 319/335-4429 (renee-anthony@uiowa.edu).



STATEWIDE EMPLOYER SURVEY

**Examining How Substance Use and Mental
Health Impact Workplaces**



*Help inform policies and
best practices in your state.*

➔ bit.ly/2025EmployerSurvey

2025 I-CASH Agricultural Youth Grant Awards

by Tabitha Kuehn, BS, I-CASH Outreach Coordinator

Each year I-CASH provides grant funds to Iowa youth groups who help educate community members and improve safety on farms in their area. This year ten projects were funded.

Butler County ISU Extension and Outreach

This project aims to educate fourth-grade students in Butler County on various safety topics, including agricultural, home, chemical, and water safety. The project will involve a Youth Ag Safety Day, where students participate in educational sessions and receive resources, such as a farm/home safety form. The students will complete this form with their families, promoting safety awareness and encouraging families to evaluate and improve safety measures at home. The most impactful component of the project is the laminated safety checklist that families will use to create emergency plans together, ensuring ongoing safety practices and allowing the form to be updated as needed.



In 2024, MMCRU FFA members held a farm safety day in Marcus, IA with over 300 students.

Carroll County ISU Extension and Outreach

This project focuses on farm, tractor, and animal safety. The plan involves creating a workshop for younger 4-H members (Clover Kids and junior members), led by older county council members (8th-12th grade). The workshop will include rotations on farm safety, animal safety, and tractor safety, with hands-on activities involving live animals (e.g., dogs, goats, rabbits) and farm machinery. The goal is to provide important safety education to younger members, especially ahead of county fair season. The project also aims to develop leadership skills in county council members by having them take charge of the workshop, with guidance from the project organizer.

Cedar Livestock 4-H Mahaska County

This project focuses on providing first-aid-kits to rural farm families. The 4-H Club plans to research the best first-aid-kits for farming communities, aiming for a balance between affordability and quality. Since emergency services may take time to arrive in rural areas, the goal is to ensure families have the necessary supplies to handle emergencies. The project will involve distributing these kits along with educational materials on their proper use. The biggest impact of the project is equipping farm families with the tools necessary in case of an injury. The 4-H club has previously raised awareness through a farm safety video, and this project continues their commitment to farm safety.

Charles City FFA

This project addresses heat and UV/sun safety, particularly for youth. The Charles City FFA Chapter, in collaboration with Central Springs and Rockford FFA Chapters, and Floyd County ISU Extension and Outreach, will organize an annual Farm Safety Day Camp for all 4th graders in Floyd County. The camp will focus on educating students about the risks of sun exposure, including the increased risk of melanoma and eye problems like cataracts. To ensure the curriculum is up-to-date, the team will consult with extension office personnel and health professionals, as well as conduct online research. The biggest impact of the project is raising awareness about the long-term risks of sunburn and UV exposure, particularly in young children.

Iowa County ISU Extension and Outreach

This project will bring the Iowa State University Biosecurity Trailer to the 4th Grade Ag Exploration Field Trip, where students will experience hands-on demonstrations on how germs spread and the importance of biosecurity. Iowa State University Extension and Outreach Swine Specialist, Matt Romoser, will lead discussions on safety

continued on page 5

precautions and best practices for farmers, with a focus on preventing the spread of diseases in both humans and animals. The goal is to educate youth about the vital components of agriculture, emphasizing the importance of safety and health in daily agricultural practices. The most creative aspect is the interactive experience provided by the biosecurity trailer, which offers practical learning opportunities for students.

Lake 4-H Muscatine

This project focuses on hearing loss prevention, particularly for farmers and youth. The team plans to research organizations that specialize in hearing loss and interview people with experience in this area to gather information on best practices. The primary activity will involve distributing earplugs and posters, along with holding a drawing for a pair of earmuffs. The goal is to educate individuals about the importance of wearing hearing protection around loud machinery. The biggest impact of the project is expected to be the distribution of earplugs and encouraging people to adopt consistent hearing protection habits.

Southwest Valley FFA

This project aims to raise awareness about personal safety and the importance of personal protective equipment (PPE) for farmers. The team will collaborate with school nurses, public health professionals, and an extension director to identify the essential PPE needed on farms. Students will research suitable equipment and create an educational display to be showcased at the Adams and Montgomery County Fairs, as well as other community events. The project will provide farmers with necessary PPE and distribute earplugs to community members, along with information on hearing protection. The most impactful aspect will be the distribution of PPE and the creation of the educational display to inform and engage the community.

Washington County ISU Extension and Outreach

This project addresses various farm safety topics, including chemical, respiratory, equipment, roadway, hearing, and eye safety, with a special focus on mental health. The “Stay Safe, Take a Break” initiative provides farmers with safety resources and mental health support during the stressful harvest season. The 4-H County Council youth help organize, pack, and deliver these care packages directly to farmers in the field. The bags contain safety items, snacks, and mental health resources from Iowa State University Extension. In 2025, additional mental health materials will be added to further support farmers. Younger 4-H members, including Clover Kids, will contribute gratitude cards to personalize the bags. The biggest impact of the project is the personal delivery by youth, which strengthens community connections and shows farmers they are valued, while also serving as a daily safety reminder in the field.

West Sioux FFA

This project focuses on promoting hearing and eye protection for farmers. During the annual “Feed the Farmer” event, sack lunches prepared by kids will be distributed alongside earplugs, safety glasses, and information on hearing loss and eye safety. The goal is to provide affordable, easily accessible protective gear for farmers while they work with machinery. The most impactful aspect of the project is ensuring that farmers have immediate access to the necessary protection, encouraging safer practices in their daily operations.

Wright County Teen Council

This project aims to enhance farm safety for youth in Wright County. The Teen Council will create and distribute 60 youth farmer bags to farm families with young children, containing essential safety resources like safety vests, sunscreen, and first-aid-kits. The council will also use social media and local press releases to raise awareness about farm safety and encourage positive habits to prevent injuries and fatalities on the farm. They will research best practices, equipment, and budgeting to ensure the bags are effective and affordable. The biggest impact of this project is the increased awareness of common farm hazards and the proactive measures families can take to protect youth, such as improving visibility with safety vests, preventing sunburns with sunscreen, and providing quick access to first aid for minor injuries. This initiative fosters a culture of preparedness and responsibility, supporting the well-being of young farmers and contributing to a safer farming environment.

Applications for the 2026 Youth Grants will be available in January, visit www.i-cash.org for details.

Ag Health Academy Courses

by Kay Mohling MA, Agricultural Safety and Health Course Coordinator



The [Ag Health Academy Learning Community](#) provides advanced training on health and safety hazards and prevention in agriculture. The 90-minute virtual meetings started in April and are scheduled for the third Wednesday of each month at 12:00 p.m. (CT).

The [“Roadway Hazards”](#) course was held on April 16th with presenters Cara Hamann, Associate Professor of Epidemiology at the University of Iowa; Jonathan Davis, Assistant Professor in Occupational and Environmental Health at the University of Iowa; and Omar Ahmad, Deputy Director of Driving Safety Research Institute. Risk factors associated with rural crashes were discussed and the community campaign “We’re On This Road Together” which aims to raise awareness of rural roadway safety was highlighted (see page 8 for additional information). The session ended with a discussion of the unique challenges that rural roadways pose to automated driving systems.

On May 21st, Dr. Kanika Arora, Associate Professor at the University of Iowa’s Department of Health Management and Policy in the College of Public Health, and Dr. Julie Bobitt, Assistant Professor at the University of Illinois at Chicago’s Department of Medicine provided an informative presentation on dementia and farmers. The session outlined the different types of dementia and specific dementia-related changes that may result in risk factors for farming operations. Caregiver perspectives illustrated the impacts that a family member with dementia can have on farm operations. Drs. Arora and Bobitt are both involved with the NIOSH-funded project, [“Farm Safety for Rural Families Coping with Dementia”](#) and have collaborated with community members and extension experts to create the “Farm Families Coping with Dementia” program (see story on page 10).

On June 18th the topic will be “Pathogen Updates: Agrotourism and Rabies.” Carrie Klumb, MPH, senior epidemiologist at the Minnesota Department of Public Health in the Zoonotic Diseases unit will discuss healthy animal handling and provide updates on outbreaks associated with agrotourist events. Andrew Hennenfent, DVM, MPH, Iowa State Public Health Veterinarian will highlight new rabies information for attendees.

These programs are available at no cost. Visit the Ag Health Academy [website](#) for a full list of topics and schedule; email cph-greatplainscenter@uiowa.edu with questions.

National Farm Safety & Health Week - September 21 - 27, 2025

Fall harvest time can be one of the busiest and most dangerous seasons of the year for the agriculture industry. For this reason, the third week of September has been recognized as National Farm Safety & Health Week. The 2025 theme is ***Safety First, Avoid the Worst***. Each day of the week has its own focus.

Daily Topics:

- Monday, September 22 - ***Equipment and Rural Roadway Safety***
- Tuesday, September 23 - ***Health and Wellness***
- Wednesday, September 24 - ***Generations of Farming***
- Thursday, September 25 - ***Confined Spaces***
- Friday, September 26 - ***ATV/UTV***



The [MRASH Conference website](#) has been updated to include links for submitting abstracts and an expanded schedule. Conference details will be added as they are confirmed.



While the MRASH schedule is still being finalized, plans are to offer the keynote and one strand of the breakouts virtually. The Thursday morning session will begin at 10:00 am and open with the keynote address from Dr. Bender, followed by discussion time with an interdisciplinary panel. After lunch (and the popular student networking lunch), the afternoon will include mini workshops (similar to last year's "Messaging in Minutes" session) focused on innovative ways to collaborate with new partners and address specific One Health issues. Presentations on stress and mental health resources will also be included in the afternoon, with the poster session and reception at the Hotel Millwright to end the first day of the conference. The conference will continue Friday morning with breakout sessions and close after the awards luncheon.

In these challenging times, it is important to find ways to work together more effectively and also to recharge. We are so fortunate in the field of agricultural safety and health to work with some of the world's most compassionate, intelligent, and generous colleagues. The MRASH Conference is one place we can share ideas and show our appreciation for the wonderful partners we are so privileged to have. Thank you for all you do to make a difference. Your participation is what makes the MRASH Conference successful!

Join us as a sponsor, a presenter, and/or an attendee!

2024 MRASH Pre-conference Workshop – Lessons Learned

by Kim McMichael, GPCAH Coordinator

As part of the 2024 MRASH Conference, GPCAH held a pre-conference workshop titled ***"Working with Media to Communicate Ag Health and Safety Messaging."*** The objective of the workshop was to provide guidance on how to improve communication with the media to share messages that focus on agricultural safety and health.

Over 30 participants worked with media experts to discuss best practices and useful tools to engage with the media, in print, radio, and television. GPCAH created a video presentation discussing lessons learned, including how to prepare for a media interview, the benefits and drawbacks of sending a press release, and establishing a relationship with journalists. For more in-depth information, view the [video here](#).

Best Practices to Provide a Good Interview



Make story relevant to broad audience



Statistics vs stories



Farmer perspectives



Make yourself available after the interview - As journalist learns more, may need more clarification

Community Campaign to Reduce Farm-Vehicle Roadway Crashes

by Cara Hamann, MPH, PhD, Core Director for Training and Education, IPRC



The [“We’re On This Road Together”](#) Project has launched a campaign for rural roadway safety in Iowa and Indiana communities, empowering extension educators to promote safety in their local communities. The project is led by a collaborative team from the University of Iowa and Purdue University.

In 2024, three extension educators in Iowa pilot tested the campaign after receiving training and technical assistance from the GPCAH team. The toolkit was modified based on feedback from the pilot cohort. In early 2025, eight extension educators from seven counties in Indiana were recruited and received training, campaign materials, and a toolkit for action. These educators are currently sharing materials through local events, outreach to businesses and on social media.

The campaign focuses messaging on three simple strategies to reduce passenger car/farm vehicle collisions:

1. Avoid passing
2. Leave more space
3. Slow down

As part of the project, educators collect surveys from their local community members on roadway safety in their area. This data from hundreds of respondents will be used to analyze the impact of the campaign. Researchers are also evaluating how extension educators respond to the training and campaign materials, and their experiences with implementation.

GPCAH Journalist Workshop

The Great Plains Center for Agricultural Health will host a workshop for journalists July 9, 2025, in Iowa City, IA. ***Farming the Message: How Media Can Cultivate Ag Safety Awareness*** is a story-generating workshop designed to help journalists cover complex safety and injury issues related to Midwestern agricultural production. The half-day workshop will include roundtable discussions with farmers, safety and health professionals, and community members with first-hand experience in farm fatalities and injuries. The workshop will provide an opportunity to share perspectives with the goal of identifying ways to provide valuable farm safety information through the media. In addition, the GPCAH will provide demonstrations and resources highlighting Center projects including gas monitoring, hearing loss prevention, and field devices to measure tractor vibration.

There is no cost to attend the workshop, but seating is limited. Visit the [workshop website](#) for details. **Registration deadline is June 13, 2025.**

JOURNALISM WORKSHOP

Farming the Message: How Media Can Cultivate Ag Safety Awareness



WEDNESDAY, JULY 9

FROM 8:00 AM - 12:00 PM
COLLEGE OF PUBLIC HEALTH, UNIVERSITY OF IOWA
IOWA CITY, IA

WORKSHOP HIGHLIGHTS

STORIES FROM
FARMERS

AG SAFETY &
HEALTH RESOURCES

EXPERT-LED
SESSIONS

DEVELOPING
CONNECTIONS WITH
AG COMMUNITY

FOR MORE INFORMATION: GPCAH.PUBLIC-HEALTH.UIOWA.EDU/JOURNALIST-WORKSHOP/



Protect your flock against the spread of bird flu

by Mandy Archer, BA, GPCAH Outreach Specialist

Ellen Duysen, Outreach Coordinator for the Central States Center for Agricultural Safety and Health (CS-CASH), and Declan Tschirren, an eighth grade 4-H and FFA member, recently spoke about raising backyard chickens for the [Safety Watch column](#) in the May issue of *Iowa Farmer Today*. In the article, Duysen gives practical advice for guarding your flock from the wild bird population, which is one of the best methods to prevent the spread of avian flu.

Duysen and Tschirren both have backyard chicken flocks and have created the flyer “Avian Influenza/Bird Flu: PPE for Backyard Flocks” (<https://bit.ly/Youth-Backyard-Flocks>). CS-CASH is also sending out bird flu personal protective equipment (PPE) kits to farmers and agriculture classrooms at no cost, with 900 kits already distributed. “We’ve got clear safety glasses, shaded glasses, some N95 respirators, boot covers, hand sanitizer if you can’t get to water, and a bunch of disposable gloves for handling a sick bird or disposing of a dead one,” Duysen explained. These kits help ensure the safety of poultry handlers and their flocks. If you would like to receive a free “Protect You and Your Flock” PPE kit please email Ellen Duysen at ellen.duysen@unmc.edu.

For more information on raising backyard poultry listen to the GPCAH FarmSafe podcast episode, “Flock & Flu: Guidelines for Backyard Poultry,” featuring Ellen Duysen at <https://gpcah.public-health.uiowa.edu/backyard-poultry/>.



Declan Tschirren is featured in the flyer, “Avian Influenza/ Bird Flu: PPE for Backyard Flocks” which is part of the “Protect You and Your Flock” kit distributed by CS-CASH. Photo courtesy of CS-CASH.

FarmSafe Podcast - Spring Episodes

by Libby Ritchie, MPH, GPCAH Research Assistant

In April, the GPCAH Outreach Core released five new episodes of the [FarmSafe Podcast](#). Bringing timely and critical conversations to listeners, the Spring Bundle of new episodes focused on the growing threat of bird flu and important considerations for protecting backyard flocks, proactive measures for preventing fires and responding to burn injuries on farms, and how social, practical, and monetary factors influence child care access and subsequently child safety on farms.

Stay tuned for our Summer Bundle of new episodes coming in July!

Season 4

April Bundle of New Episodes

SPRING EPISODES

Planting Seeds of Safety this Spring

Available April 23, 2025

- Ep. 07 - *Flock & Flu: Guidelines for Backyard Poultry*, with Ellen Duysen
- Ep. 08 - *Growing Safely, Part 1: Navigating Child Care Access & Farm Safety*, with Dr. Florence Becot
- Ep. 09 - *Growing Safely, Part 2: Balancing Farming & Family*, with Dr. Florence Becot
- Ep. 10 - *Growing Safely, Part 3: Closing the Child Care Access Gap*, with Dr. Florence Becot
- Ep. 11 - *Farm Burn Basics: First Aid for the Field*, with Jerry Minor

Farm Safe
GPCAH.ORG

Farm Safety for Rural Families Coping with Dementia

by Kanika Arora, PhD, Associate Professor of Health Management and Policy, University of Iowa

Older agricultural workers are at a higher risk of developing dementia, a condition that increases the likelihood of injuries, particularly for those living or working on farms and ranches. People with dementia, including those in farming communities, rely on family members to help keep them safe. However, interviews with farm families revealed that while resources for home safety and general farm safety exist, there are no programs specifically addressing the safety and caregiving challenges related to dementia in agricultural environments.

To address this gap, researchers from the University of Iowa (Kanika Arora) and the University of Illinois Chicago (Julie Bobitt) collaborated with community members and extension experts to create a program called [Farm Families Coping with Dementia \(FFCD\)](https://redcap.link/FFCD). The program is designed for caregivers/family members of agricultural persons showing signs of dementia or cognitive impairment. FFCD aims to reduce injuries among older farmers with memory issues and to support the mental health of their caregivers, many of whom are part of the agricultural community themselves. The program consists of four weekly modules covering: 1) dementia basics, 2) farm safety and dementia, 3) improving safety with dementia, and 4) caregiving and communication.

Supported by the National Institute for Occupational Safety and Health (NIOSH), a study is being conducted to evaluate how FFCD influences participants' understanding of dementia, feelings of caregiver burden, confidence in caregiving skills, and plans to enhance safety for individuals with dementia. We are looking for adults (18+) who have a family member with dementia living or working in a farming community to join this free, 4-week FFCD program. Sessions are held online via Zoom for 60 minutes each week. Participants will be randomly assigned to one of two groups: one group begins in July 2025, and the other in January 2026. Group placement is random and cannot be chosen. The program will be led by trained staff from the University of Illinois Extension.

As part of the study, participants will be asked to complete two surveys—one at the start and another three months later. Each survey takes about 20 minutes to complete, and participants will receive \$20 for each survey, for a total of \$40. All study participants will also be invited to take part in an in-depth interview to discuss how the training has impacted their actions and habits. Those who participate in the interview will receive an additional \$10.

Farm Families Coping with Dementia (FFCD) A Research Study



Do you have a relative with dementia who lives or works in a farming community?

*You may be eligible for **Farm Families Coping with Dementia (FFCD)***

FFCD is a free, **online** educational series designed to support caregivers of agricultural persons who exhibit signs and symptoms of dementia

Over **four weekly sessions**, learn about:

- Dementia Basics
- Farm Safety and Dementia
- Improving Safety with Dementia
- Caregiving and Communication

Get up to \$50 for surveys and feedback

When: You will be enrolled in FFCD beginning in either **July 2025** or **January 2026**.

Where: Online/Zoom



Interested?

Scan QR Code or Visit:
<https://redcap.link/FFCD>

Contact

Kanika Arora

kanika-arora@uiowa.edu
319.384.3817

Julie Bobitt

jbobitt@uic.edu
312.355.0247



College of
Public Health



Illinois Extension
UNIVERSITY OF ILLINOIS URBANA-CHAMPAIGN



If you're interested in learning more, please scan the QR code in the brochure or click on this link:
<https://redcap.link/FFCD>

NEWS AND UPDATES

SAVE THE DATE

The Midwest Rural Agricultural Safety and Health Conference (MRASH) will be held at the Hotel Millwright in Amana, IA on November 13-14. **Cultivating Connections: Health, Safety & Wellness in Agriculture** is the conference theme. Abstracts are now being accepted for presentations, roundtables, and posters. Visit the [conference website](#) for details.



2025 Ag Educator Posters

The GPCAH is excited to announce the release of 7 new [educational posters](#) designed to enhance safety awareness and training for agricultural professionals. The 2025 posters were developed using content from GPCAH's Ag Health 101 units and focus on the following topics: Air Quality and Gas Exposures; Center of Gravity: Tractors; Confined Space Safety: Grain Storage Structures; Confined Space Safety: Manure Storage; Fall Risks on the Farm; Preventing Pesticide Drift; and Respirator Protection Selection. These new resources are now available for free download. We encourage agricultural educators to incorporate these materials into their training programs to promote a safer farming community.

2025-2026 Pilot Grant Updates

As previously stated in the Director's message, the GPCAH is likely to lose funding due to the elimination of NIOSH. Due to these unfortunate circumstances, we have made the decision to suspend solicitation for the 2025-2026 pilot grants. The GPCAH understands the time and effort that each applicant puts into their submission and does not want applicants to continue working on their proposals given the uncertainty of funds. Projects funded during the 2024-2025 project period are progressing as expected.



Upcoming Events

June 23-26

International Society for Agricultural Safety and Health (ISASH) Conference
Portland, ME

June 29 - July 3

National Association of County Agricultural Agents
Annual Meeting
Billings, MT

July 8-11

Agricultural Health and Safety Course for Medical and Safety Professionals
Omaha, NE

July 9

Journalism Workshop - Farming the Message: How Media Can Cultivate Ag Safety Awareness
Iowa City, IA

July 13-16

ASABE 2025 International Meeting
Toronto, Ontario, Canada

July 30-31

Iowa Women in Agriculture
Ankeny, IA

August 5-7

Minnesota Farmfest
Morgan, MN

August 26-28

Farm Progress Show
Decatur, IL

September 9-11

Husker Harvest Days
Grand Island, NE

September 21-27

National Farm Safety & Health Week

November 13-14

Midwest Rural Agricultural Safety and Health (MRASH) Conference
Amana, IA



The University of Iowa prohibits discrimination in employment, educational programs, and activities on the basis of race, creed, color, religion, national origin, age, sex, pregnancy, disability, genetic information, status as a U.S. veteran, service in the U.S. military, sexual orientation, gender identity, associational preferences, or any other classification that deprives the person of consideration as an individual. The university also affirms its commitment to providing equal opportunities and equal access to university facilities. For additional information on nondiscrimination policies, contact the Director, Office of Equal Opportunity and Diversity, the University of Iowa, 202 Jessup Hall, Iowa City, IA 52242-1316, 319-335-0705 (voice), 319-335-0697 (TDD), diversity@uiowa.edu.